

CONDITIONS OF BOOKING

1. The booking form and deposit.

Your signed and completed booking form must be accompanied by a non-refundable deposit of **£50** per adult and **£10** per child towards the cost of accommodation. This payment is your commitment until **1st February 2024**. If you are booking after **1st February** then the full amount is payable at the time of booking. Telephone reservations can be accepted provided they are confirmed by the receipt of a signed booking form, with the appropriate payment, within 7 days.

2. Paying the balance. The balance of your package cost must be paid no later than **20th February 2024**.

3. Payment. Deposits and/or final balances may be made either in cash or by cheque (made payable to Action Heart) Alternatively a bank transfer can be arranged.

4. Cancellation policy. If you wish to cancel your booking, or part of it, the lead name on the booking form must advise us in writing by email.

To cover the cost of processing your cancellation and to compensate Action Heart for the risk that we may not be able to resell your accommodation and/or travel arrangements, Action Heart will make a cancellation charge. The amount of that charge depends upon the date that we receive your written request - the greater the notice you give, the less we will have to charge as per guidelines below.

- Written notice received by 1st February
- loss of deposit only.
- Written notice received between 2nd February and 20th February inclusive
- 50% of total tour cost.
- Written notice received between 21 February and 8 March inclusive
- 75% of total tour cost.

- Written notice received on or after 9 March
- 100% of total tour cost.

5. Additional notes regarding pricing.

The lesser charge for children is dependent upon two adults occupying the same room. Hotels insist that if only one adult occupies the room then they (the adult) will be charged the same rate as if they had booked the room for sole occupancy. Cots and highchairs for infants are available free of charge - provided that they are pre-booked.

6. The prices quoted include:

- B & B accommodation at **DOUBLETREE by Hilton London EXCEL** hotel, including full buffet breakfast.
- Coach travel to and from London, coach transfer to the start, the spectator service, post race showers and refreshments at the **NOVOTEL London West in Hammersmith**.

7. The prices quoted do not include:

- your transport to and from a coach pick-up point, hotel drinks, telephone calls, papers etc. meals other than breakfast, - car parking fees, travel from race finish back to hotel, travel insurance, the London Congestion Charge.

8. Late changes. Be aware that ACTION HEART (AH) negotiate discounted rates on rooms, car parking etc. with special departments in each hotel. These departments have nothing whatsoever to do with Hotel Reception who have no facility nor any authority to modify bookings made between AH and the hotel agent that AH have to work through.

All requests to change or to cancel any aspect of a booking made MUST be directed to AH - not the hotel concerned. ACTION HEART accept no responsibility for the outcome of any attempt by a client to negotiate directly with the hotel and will deem any such changes to be invalid and a breach of the original guest's contract with AH.



LONDON MARATHON WEEKEND PACKAGE 2024



ENJOY A HASSLE-FREE, COMPREHENSIVE LONDON MARATHON WEEKEND TOUR PACKAGE ORGANISED BY RUNNERS FOR RUNNERS.

- High quality coach travel from the Midlands to London
- Accommodation at the Doubletree Hilton, Excel
- Coach transfer to start of marathon for both runners and spectators
- Spectator coach service to 24 mile point (Embankment)
- Post race refreshments and shower facilities available at the Novotel London West in Hammersmith

Contact: 01384 292233

Email :- louises@actionheart.com

5 Baird House, Dudley Innovation Centre, The Pensnett Estate
Kingswinford, West Midlands DY6 7YA.

SATURDAY 20 APRIL

TRAVEL OPTIONS

1. High class coach travel starting from Dudley with M6 Great Barr pick up point. All coaches have seat belts, toilets and experienced couriers.
2. Independent travel - for those making their own way, but linking in with the rest of the package.

MORNING

Coaches will leave Dudley at **09:00 hrs** and after the identified pick-up and a comfort stop, they will make their way directly to the Doubletree Hilton at Excel to arrive at approximately **13:00 hrs** allowing plenty of time to register at the Marathon Exhibition. **(Your photographic ID will be required to collect your race number)**

ITINERARY

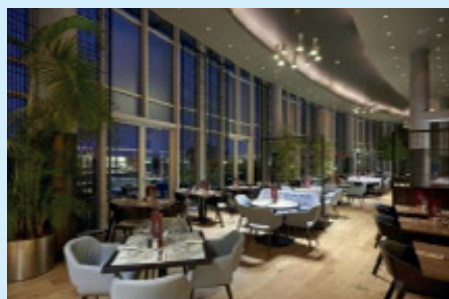
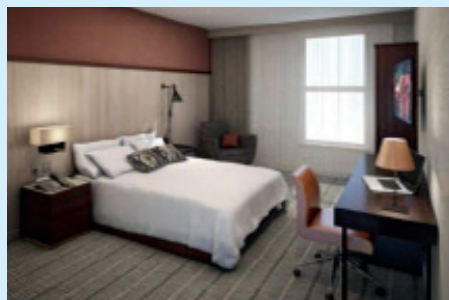
Please note that a final itinerary will be confirmed approximately one month before the Marathon.

EVENING

There will be an **optional, pre-bookable** buffet meal priced at **£25** (children U /12 **£12.50**). An à la carte option will also be available, charged separately.

ROOMS - Double , Twin, plus limited number of Family x 3 (child under 16 years of age).

Room Shares - if you are on your own and do not wish to incur the single supplement charge then you might consider a room share with another runner. You may already know someone from your club or area? If not we will endeavour to find an appropriate match.



SUNDAY 21 APRIL

Full buffet breakfast for everyone from **06:00 hrs** offering a full range of hot and cold food.

Couriered coach transfer to the start for both runners and spectators (**Loading at 07:15 hrs**). No need to stress about getting to the start on time. Coaches drop off at Blackheath Common for all starts (Red, Blue and Green).

Free Spectator Coach Transfer Service to the 24 mile point of the course will depart as the runners make their way to their official start area. Full details will be made available approximately one month before the event.

Post Race - return to NOVOTEL London West in Hammersmith to receive...

- hot shower & changing facilities
- post race refreshments

Final departure coaches depart at 18:00 hrs (drivers tachograph regulations apply).

Please note that the London Marathon has now introduced a wave start system, the latest start time being **11:30 hrs** in 2023.

This system means that runners completing the marathon in approximately 5 hours or less should comfortably make it back to Hammersmith Hotel and be ready for the **18:00 hrs** coach departure and return journey home.

However, Action Heart will routinely contact any runner with a predicted marathon time in excess of 5 hours in order to discuss the logistics of being able to return to Hammersmith Hotel and be ready for the **18:00 hrs** coach departure and return journey home, in case you are allocated a late start time.

In the meantime, please feel free to contact us with respect to the above or any other queries regarding the Package.

PRICES - per person based on 2 persons sharing

1 Night-Saturday	
Adults (16years+)	
- if travelling by coach	£210
- if making own way to London	£196
Children aged under 16	£60
Single Supplement	£77

All clients making their own way to London are GUARANTEED coach transfer to the Start on Sunday morning.

Action Heart are hoping to organise a Spectator Day Coach service on **Sunday 21st April** for friends and family if there is sufficient interest.

The coach will depart from Russells Hall Hospital at **06:00 hrs** on **Sunday 21st April**, drop off close to Tower Bridge at approximately **09:00 hrs** and leave London at **16:00 hrs**.

Please call us on 01384 292233 or email louises@actionheart.com for further details.